

partition walls





Ripo Partition walls - great solution for ambiance perfection

SYSTEMS

That our systems are custom-made remains a significant factor in the quality of the individual solution. Applications in places such as banks and insurance companies, hotel, business lounges or studios, and many other room situations are always implemented in a customer-specific fashion. This pertains to the construction as well as the design, as this brochure will show you.

Partitioning wall systems are easily adjustable for any space configuration. Partition walls are simple in the assembly process and easily transformable, depending on the room usage requirements and aim. When disassemble the RIPO partitioning system, it doesn't leave any essential installation track in the walls, ceiling or floor. This ensures partitioning system convenient configuration and transformation.

CONSTRUCTION

The Ripo sliding door and partition systems are generally manufactured according to individual specifications.

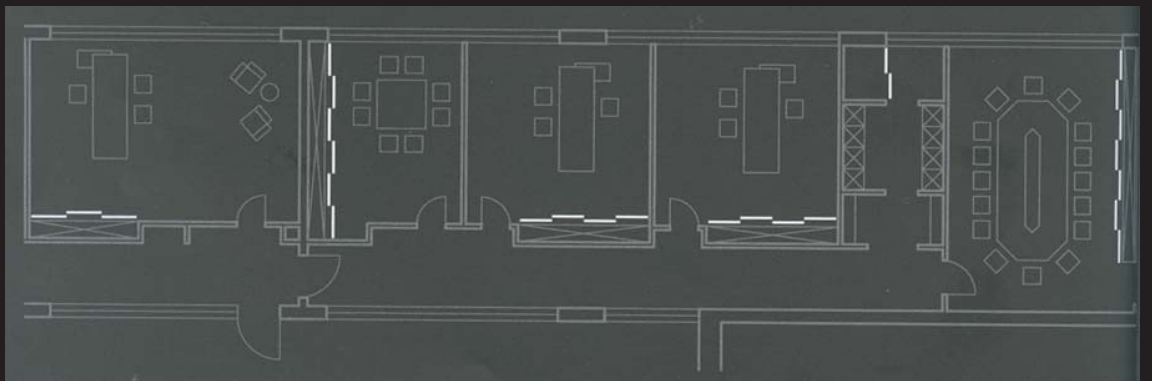
The system consists of an aluminium frame, which is delivered preassembled by the manufacturer. Connection and alignment profiles for the partitions, along with floor and ceiling tracks for the sliding doors complete the system. By means of special profiles; unevenness in wall, floors and ceiling can be balanced out.

MATERIALS

The profiles consist of aluminium AlMgSi0,5 F22 anodized E6 EV1 (silver).



1_



1_ System_ S1500, Asymmetrical
Frame_ Black Color
Panel Material_ Melamine 10mm
Closet System_ "Classic" 1 in Special melamine
Graphite Black

Plan_ Office Closets with Sliding Doors

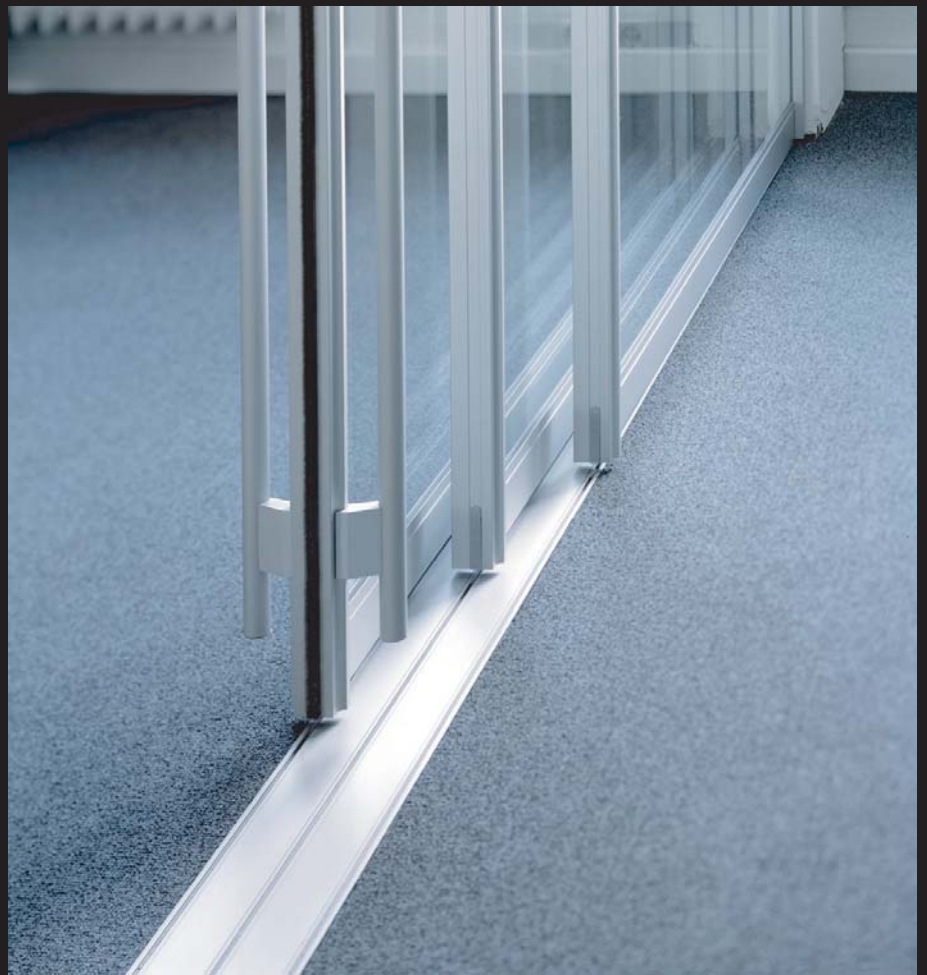


1_

1_ System_ S1500
Frame_ Silver Anodized
Panel Material_ Glass 4mm, Clear
Solution_ Wall Partitext n w S1500 Sliding Doors
Extra_ Full-length Rod Handle

- 1_ **Bottom Track** *Triple Insert*
- Extra** *S1500 Sliding Doors Partially Fitted with Rod Handle*
- 2_ **Bottom Track** *Single Insert*

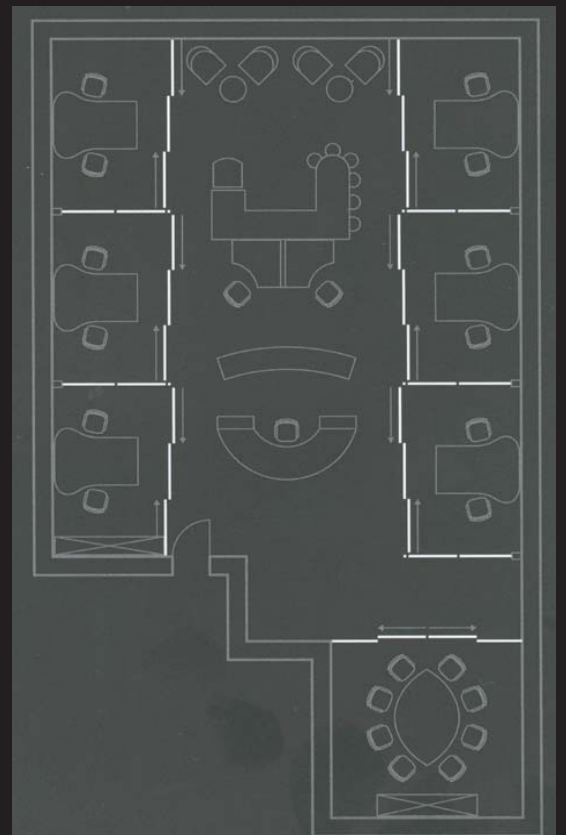
Plan *Wall Partitions Boots with two Sliding Doors and one Integral Part Element as a Doorway*



1_



2_

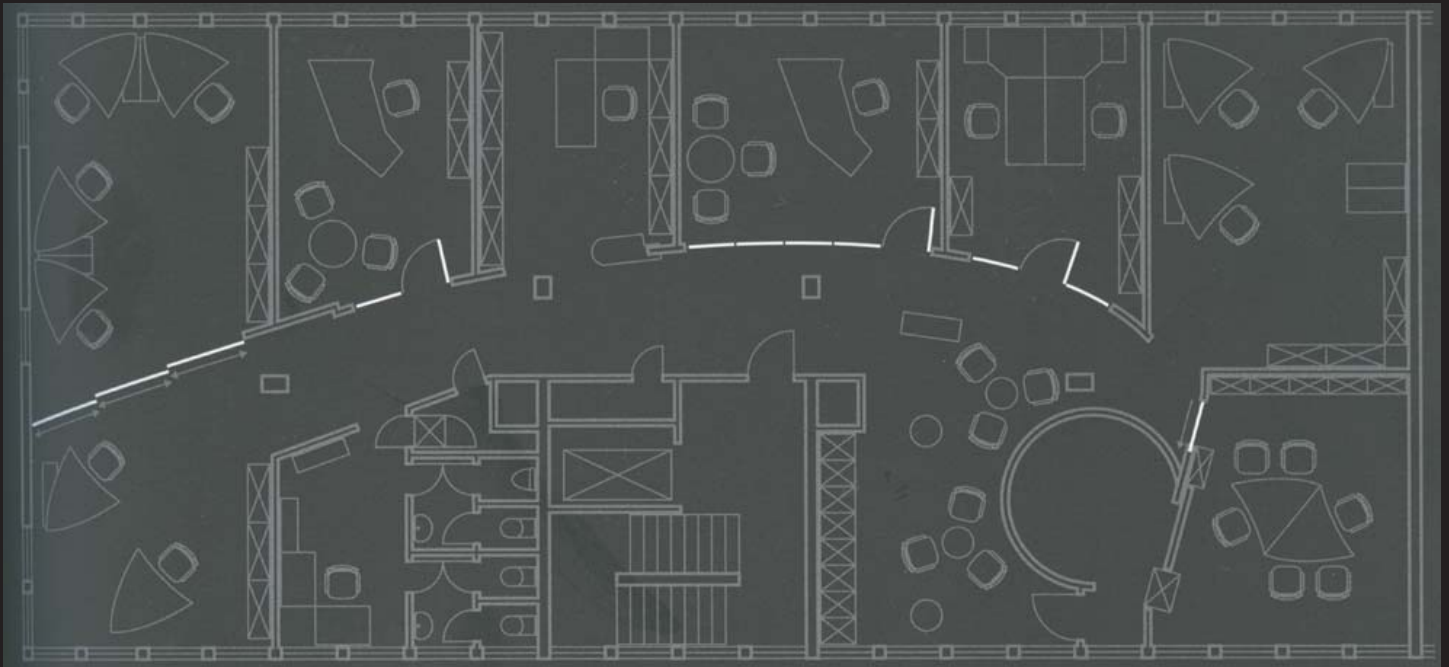




1_



2_



1_ System_ S1500

Frame_ Silver Anodized

Panel Material_ Glass 4mm, Clear

Door Leaf_ Glass, Clear

Solution_ Office Partition with Wall Partition System S1500 and Frameless Glass Door

Extra_ Roof Light

2_ System_ S1500

Frame_ Silver Anodized

Panel Material_ Melamine 10mm

Solution_ Office Partition with Sliding Doors with Excess Width

Plan_ Office Divider with Wall Partitions, Sliding Doors and Frameless Glass Doors in a curved look

1_System_S1500

Frame *Silver Anodized*

Panel Material *Glass 4mm, Clear with Satined Film*

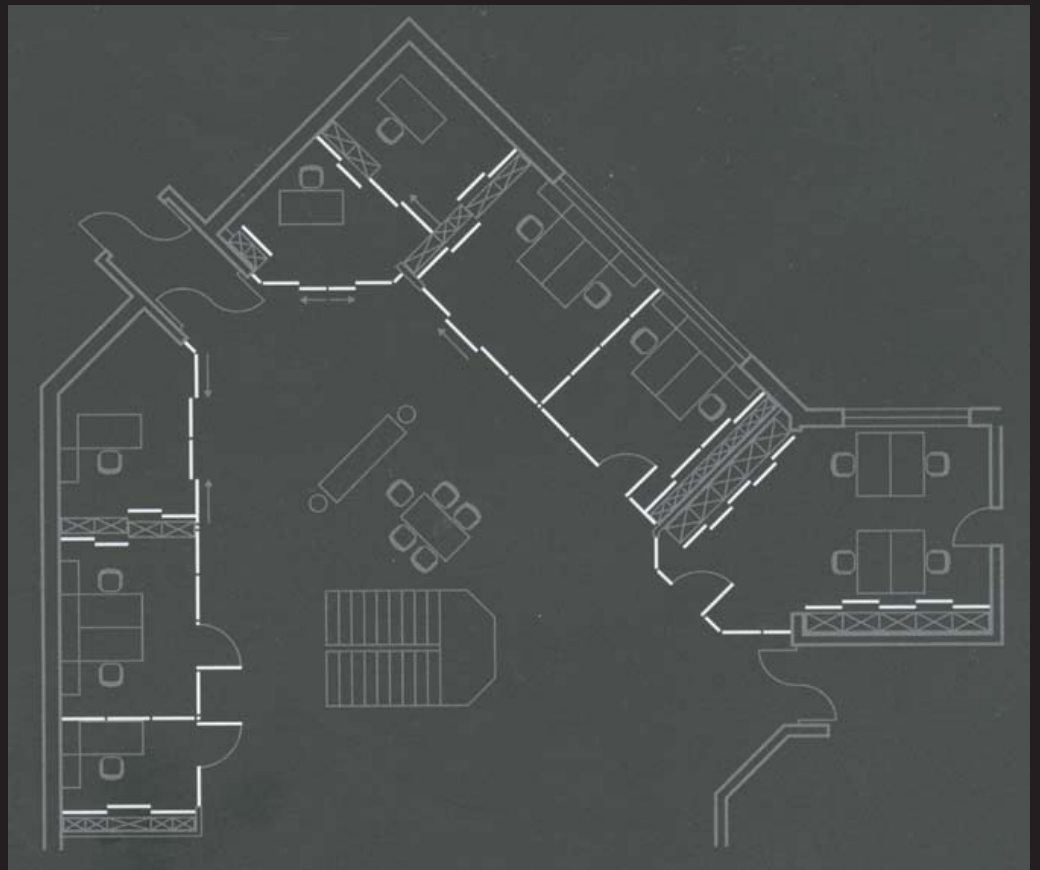
Solution *Other Partition System with Corner Construction and Sliding Doors*

Special *Top Track Suspended below Ceiling*

Plan *Open Plan Office with Free-standing Office Partitions, including Hinge Doors, Sliding Doors, and Counters*

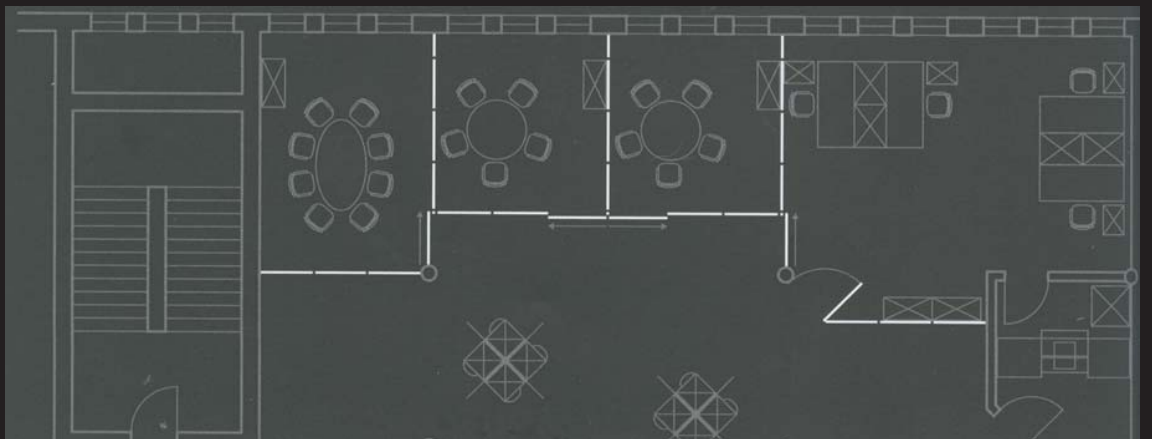


1_





1_



1_ System_ S1500
Frame_ Silver Anodized
Panel Material_ Glass 4mm, Clear
Solution_ Wall Partition S1500 with Sliding Doors and Handles

Plan_ Ground Floor Plan, Room Division with Wall Partitions System in Connection with Sliding Doors, All-glass Doors, and Corner Profile Connections



42_43

1_ Clip Connection_ two Wall Partition Elements
(detachable in order to change single elements)

2_ Clip Combination Profile

3_ Clip Profile_ for Wall Partition Elements
strengthened with a Reinforced Profile

4_ Clip Reinforced Profile_ for more stability
in the Wall Partition Construction

5_ T-Connection_ from two Wall Partitions and
a Sliding Door, through a Round Pipe

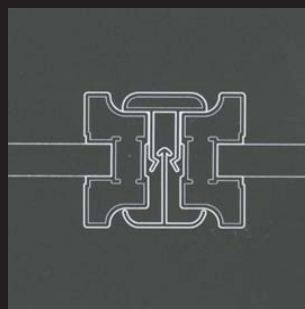
6_ T-Connection_ from three Wall Partitions,
through a Square Pipe

7_ 90° Corner_ from two Wall Partitions with
a Square Pipe

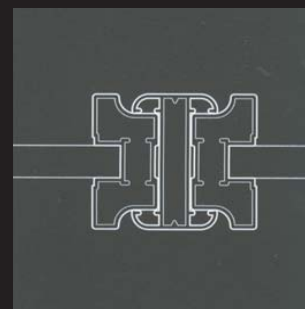
8_ Corner_ for any angle from two Wall Partitions
with a Round Pipe

9_ Y-Connection_ for any angles from Wall Partitions
and a Sliding Door with a Round Pipe

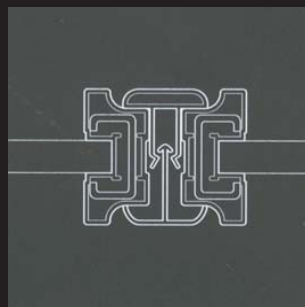
10_ 4-way Connection_ form four Sliding Doors
with a Large Square Pipe



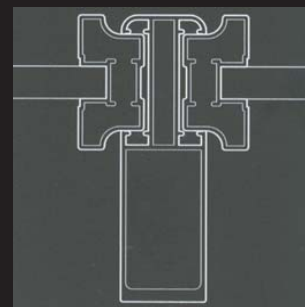
1_



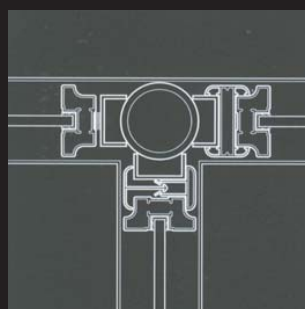
2_



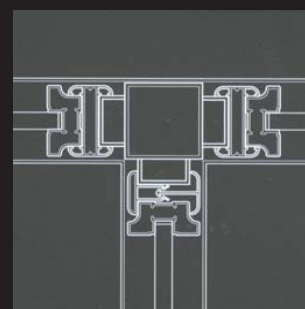
3_



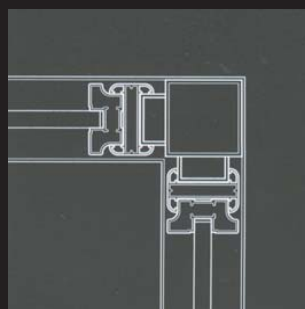
4_



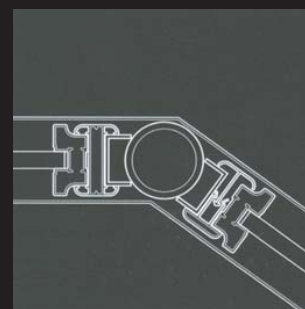
5_



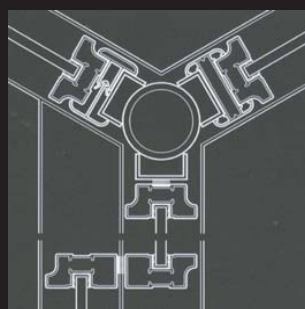
6_



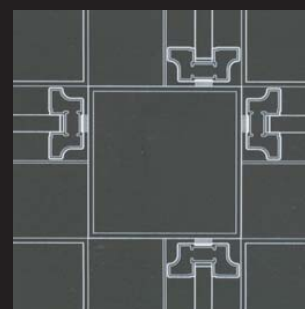
7_



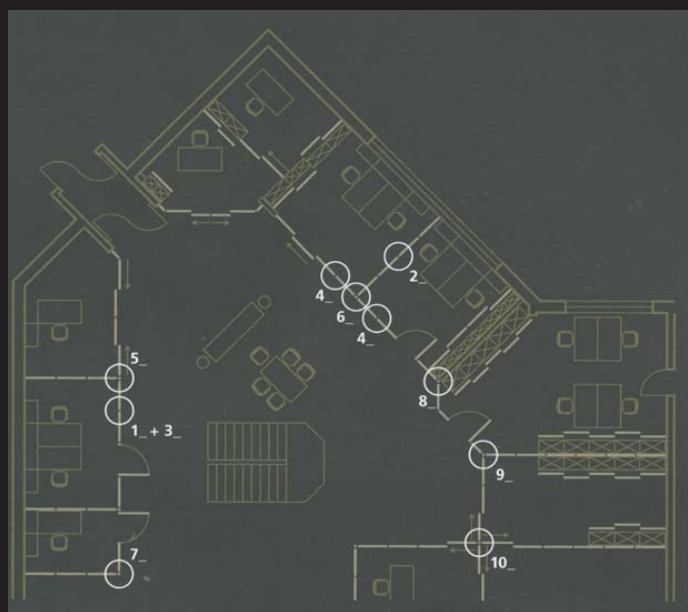
8_



9_



10_

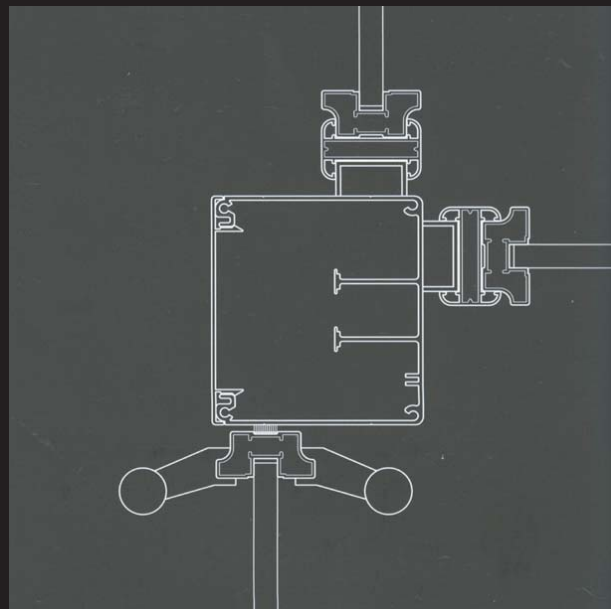


1_ Cable Channel as T-Connection_ for two
Wall Partitions and a Sliding Door

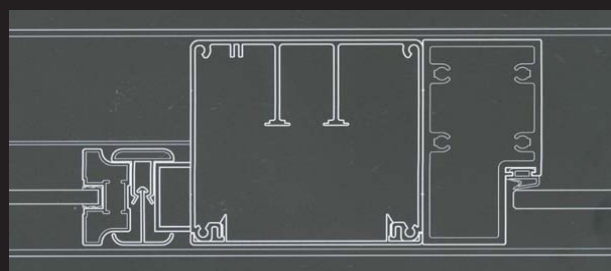
2_ Door Frame_ with a Wall Partitions Connection

3_ Door Frame_ with a Cable Channel and a
Wall Partition Connection

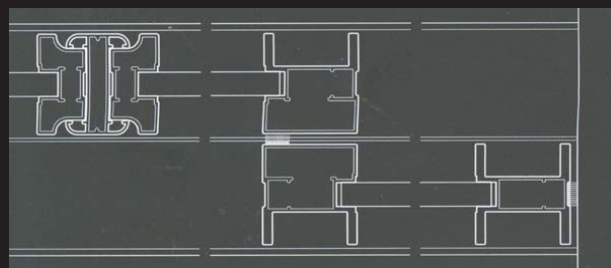
4_ Profile Combination_ S1500 and S3000 with
Wall Partiti



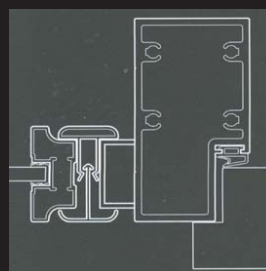
1_



3_



4_



2_



5_

RIPO FABRIKA Ltd.
Katlakalna str. 11, Riga LV-1073, Latvia
PHONE: +371 67 365 482
FAX.: +371 67 365 480
EXPO@FABRIKA.RIPO.LV
WWW.FABRIKA.RIPO.LV

RIPO AB
Representative in Sweden
PHONE: +46704051640
INFO@RIPO.SE
WWW.RIPO.SE